

Where&When



What frequency do I use?

Don't feel alone if you have this question as the right frequency for High Frequency Single Side Band (HF SSB) radio changes all the time.

There are many factors involved with finding the right frequency for the location you want to talk to, so we are always looking for the appropriate frequency to use with HF SSB.

Propagation tools provide the sophisticated calculations required to determine how the signal will move through the sky to other locations and around the world. Propagation tools provide the best guess for the right frequency for the distance between stations as defined by the difference of Latitude and Longitude between two stations. The challenge is always determining the right numbers to put into the propagation tool.

Feedback from our customers:

Sailors from the Oyster World Rally, Atlantic Rally for Cruisers and World ARC 2014 say it *Where&When* makes finding the right frequency simple.

How to get started:

Download the 5 times trial version application from our website at

<http://where-and-when.yachtfunk.com>

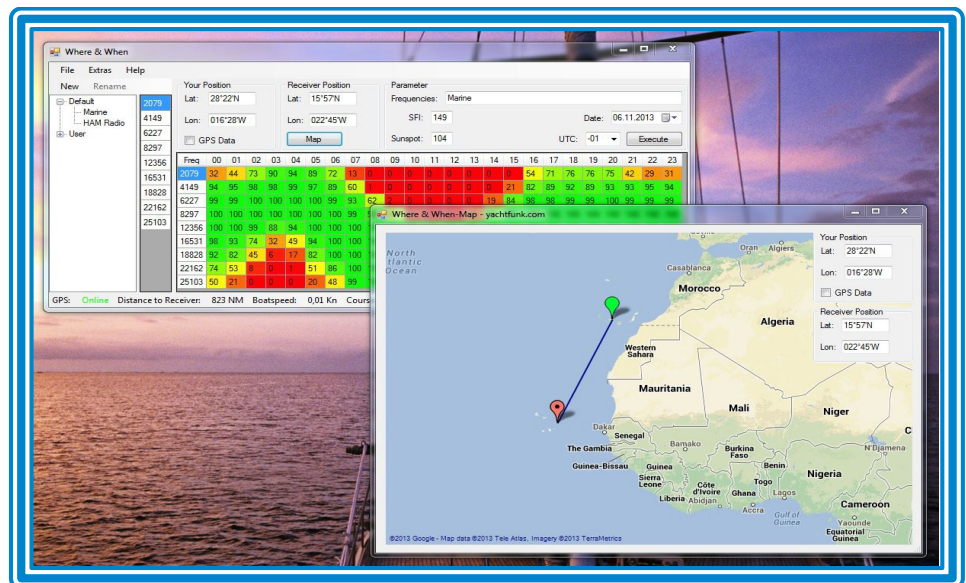
After the program is setup and running, you can then plug in your GPS and the map window will show your present location. With your mouse you can then mark the position of point you want to communicate with. The propagation window will now display the best potential frequencies and times to communicate. *Where&When* will show you the distance between the two points and the time may be displayed in UTC or for local time at either location.

Have fun with *Where&When* and you will soon see that it is not magic to communicate with HF SSB radio.

Where&When provides the simplest user interface for Marine and Amateur HF SSB communications of any propagation tool available today. Using a map, *Where&When* allows the user to locate their position and the position of the other radio you are trying to contact. The calculations are then completed based on those locations.

You can also add other frequencies that are important to your marine life such as the weather fax frequencies by location.

To make the user interface even simpler, *Where&When* will use a GPS that is connected to your computer to tell the program where you are located. The user then need only point to the location they want to call using your mouse.



- Windows XP to Win 8
- Free trial version
- GPS support
- Free Upgrades

Where&When also works on a Mac running bootcamp, parallels or wine.